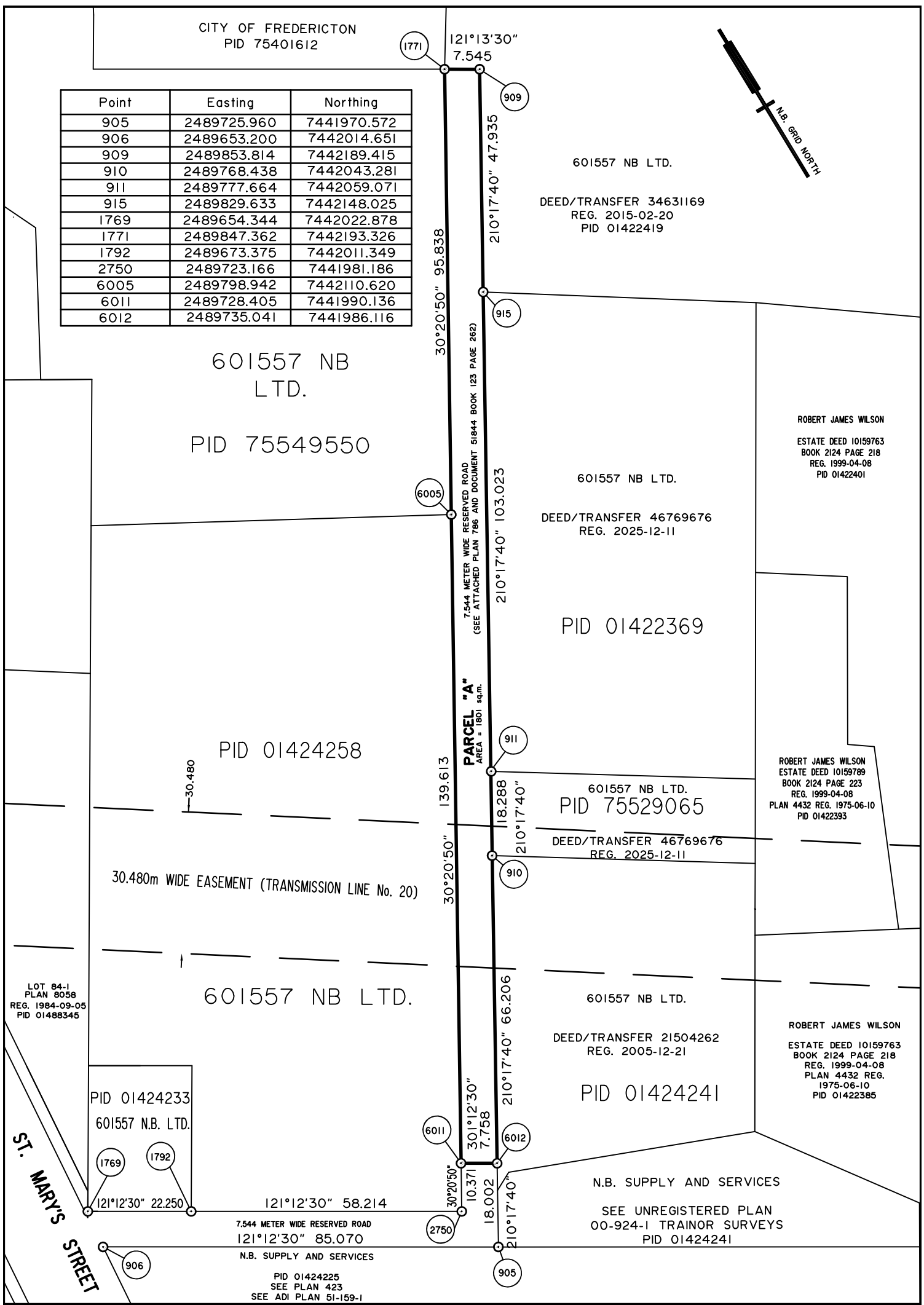
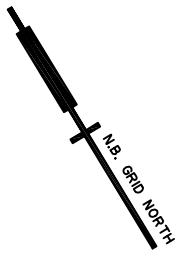


Schedule "I"

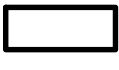
CITY OF FREDERICTON
PID 75401612

Point	Easting	Northing
905	2489725.960	7441970.572
906	2489653.200	7442014.651
909	2489853.814	7442189.415
910	2489768.438	7442043.281
911	2489777.664	7442059.071
915	2489829.633	7442148.025
1769	2489654.344	7442022.878
1771	2489847.362	7442193.326
1792	2489673.375	7442011.349
2750	2489723.166	7441981.186
6005	2489798.942	7442110.620
6011	2489728.405	7441990.136
6012	2489735.041	7441986.116



SKETCH

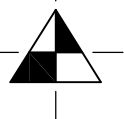
SHOWING



AREA TO BE STOPPED UP AND CLOSED
ZONE A BLOQUER ET FERMER

PORTION OF RESERVED ROAD
SAINT MARY'S STREET
CITY OF FREDERICTON
COUNTY OF YORK
PROVINCE OF NEW BRUNSWICK

CONSULTING ENGINEERS & SURVEYORS
SURTEK GROUP LTD.



JANUARY 7, 2026
DATE DRAWN

101-411 St. Mary's Street
Fredericton, NB E3A 8H4

Phone: 454-7044
Fax: 454-1147
Email: Office@SurTek.ca

SCALE 1:1000

FILE #	26203
DWG	STOP UP AND CLOSE