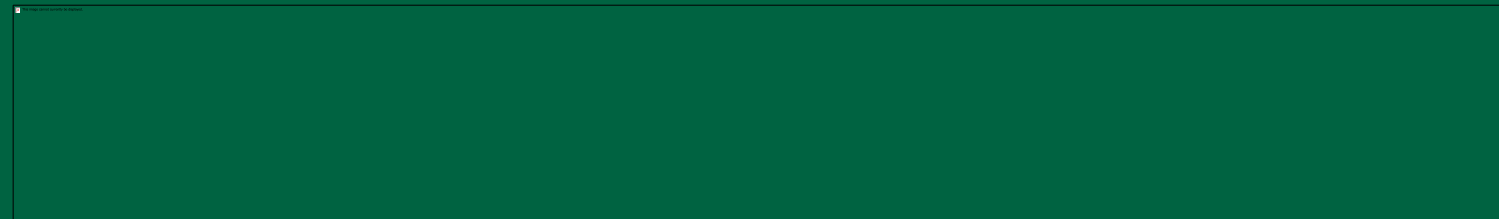


# Resilience Lands Management Framework



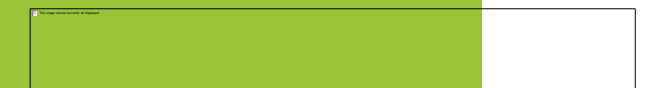
# Big Picture

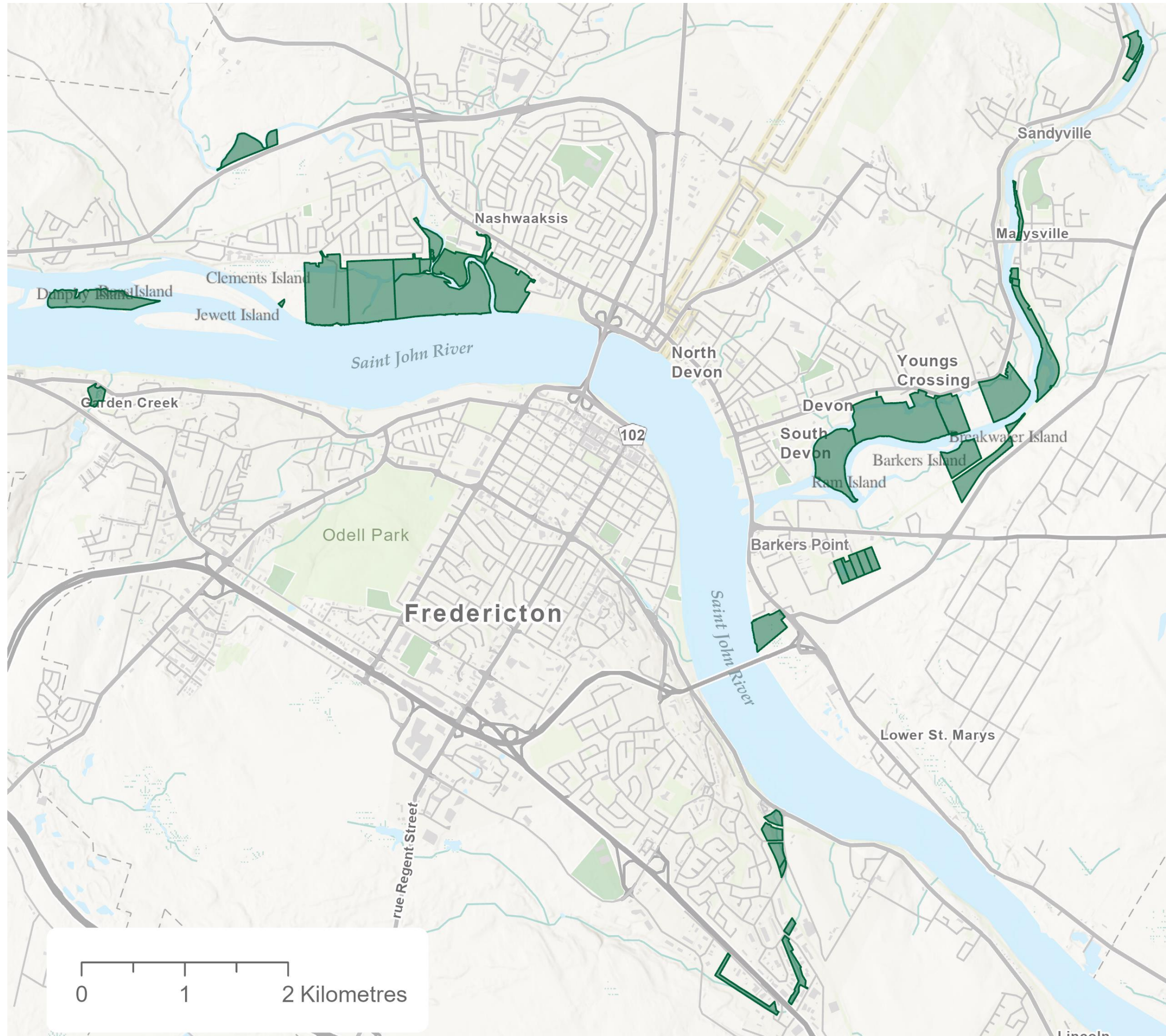
What are the "Resilience Lands" ?

- A 285+ ha network of City-owned floodplains, wetlands, and river corridors
- Represents ~2% of Fredericton's total area
- Intentionally protected through EOS zoning
- Not suitable for development

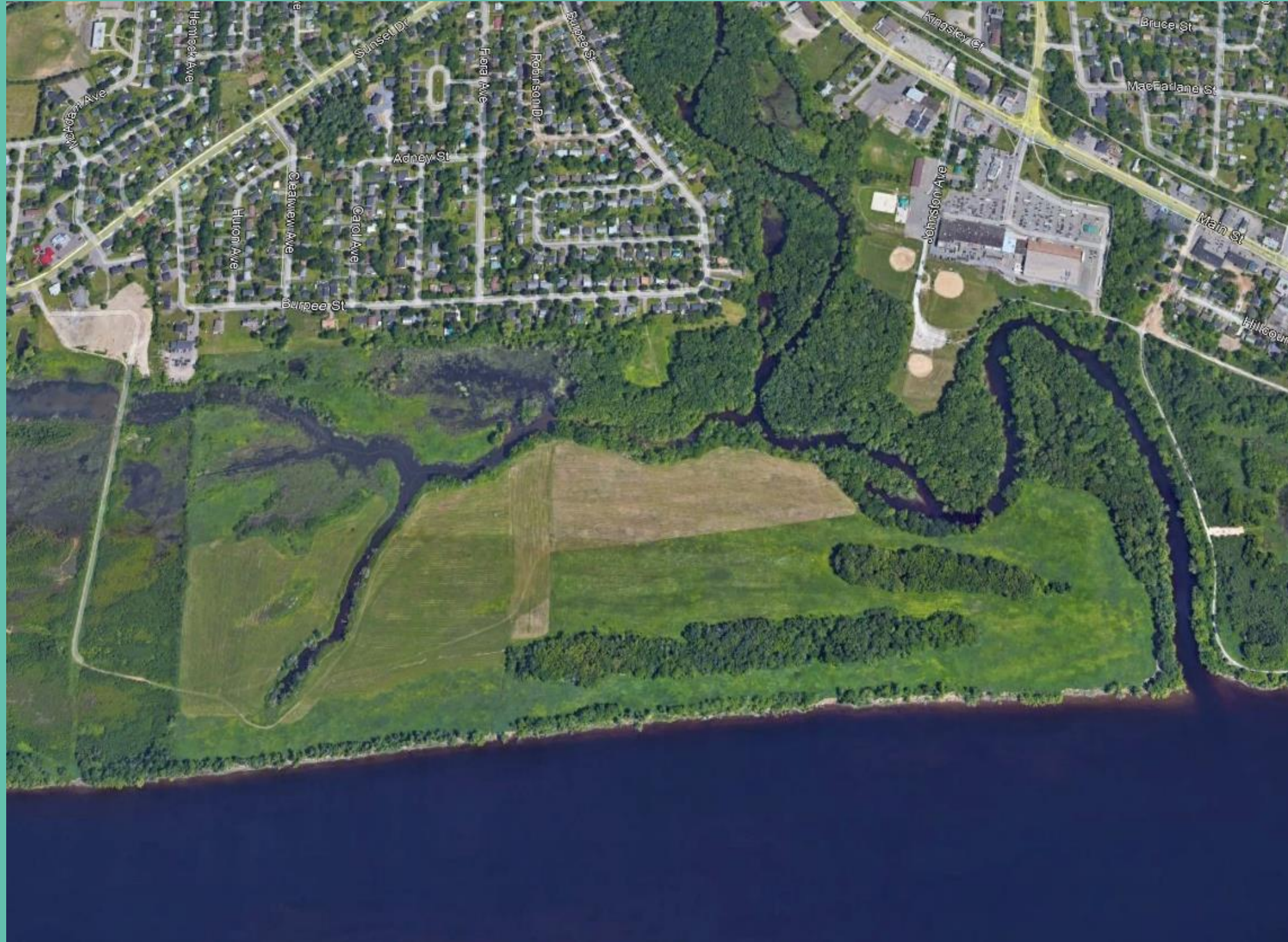
Key Messages:

These lands are quietly working for us every day, delivering resilience and public value  
The programs to acquire these lands are yielding tangible benefits  
We've done a good job acquiring these lands, but we haven't actioned them





# Burpee Flats



- Five PIDs west of the Nashwaaksis Stream
- Acquired between 2014 and 2020
- ~100 ha
- Mixture of wetland, riparian areas, & hay fields with small pockets of floodplain & upland forest
- Almost all within the frequent flood zone
- Provincially Significant Wetland
- Well-studied & a known birding hotspot.
  - 177 species noted including several Species at Risk
- Currently used for walking & birdwatching, some active haying



# Why They Matter?

These lands already

- Reduce flood risk
- Store and sequester carbon
- Provide erosion control
- Support biodiversity
- Result in urban cooling
- Reduce future project costs

Benefits of green infrastructure

# Public and Community Benefits

This Framework should

- Low-impact rec
- Improved acces
- A platform for e

# Delivering on Council- Approved Goals

The Resilience Lands directly advance goals within our Climate Change Adaptation Plan

- Particularly the long-term cost avoidance through proactive adaptation

The framework also aligns with Fredericton's Municipal Plan and reinforces the City's commitment to sustainable growth and environmental stewardship



# Climate Change Adaptation

## 1. Flooding and Extreme Weather

- Reducing flood impacts by protecting wetlands and floodplains
- Allowing rivers and streams spaces to flood safely and naturally

## 2. Protecting our Natural Infrastructure

- Conserving and restoring ecosystems, recognizing them as assets to respond to climate change

## 3. Responsible Land-use

• Limiting development in high-risk areas

• Integrating climate risk management with climate risk and site conditions

• Encouraging community participation through community partnerships



# Partnerships and Stewardship

Council's leadership has enabled partnerships, which increase results and access to funding without overburdening City resources

Examples underway include:

- Nashwaak Watershed Association
  - Restoration & stewardship along Nashwaak River
- Nature Trust of NB
  - Long term conservation of Hyla Park & Ferris St
- Ducks Unlimited
  - Wetland restoration
- UNB
  - Research in various locations
- First Nations rights-based activities



# The Resilience Lands Framework

The Framework is guided by landscape characteristics to assess compatible land management options for current and future parcels

Provides an evidence-based approach to:

- Managing existing Resilience Lands responsibly
- Evaluating low-impact land-uses
- Exploring future acquisitions with high ecological value

The Framework also ensures that:

- Future land use(s) matches site conditions, resource constraints, and potential trade-offs
- Capital and operating costs are considered upfront
- Land-use focuses on activities that balance environmental protection and public benefits



# Potential Land Management Options

The framework explored six land use options:

- River access
- Green infrastructure
- Grey infrastructure
- Horticulture/agriculture
- Light recreation
- Cultural, heritage, and educational uses

For each use, the following were outlined

- Potential benefits
- Constraints and risks
- City resource implications
- Potential partners

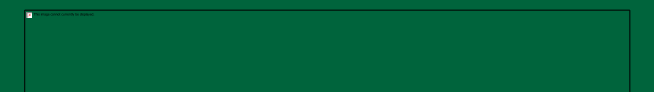
Current land holdings were then assessed to determine what land uses could be possible

# Looking Ahead

The Resilience Lands Management Framework is a starting point for site-specific discussions or planning

Future opportunities and next steps could include:

- Public communication around the existing network and its benefits
- Growing the network through strategic land acquisition
- Exploring additional partnerships and leveraging funding opportunities
- Developing site-specific management plans using data and monitoring
- Exploring potential policy levers



# Summary

Council has:

- Through acquisition, protected lands that might have otherwise been developed or degraded
- Invested in long-term climate resilience
- Demonstrated environmental stewardship and fiscal responsibility

These decisions will benefit:

- Current and future residents
- City operations
- Local wildlife and ecosystems

The Resilience Lands deliver significant environmental, social, and economic benefits to Fredericton



# Questions?

