



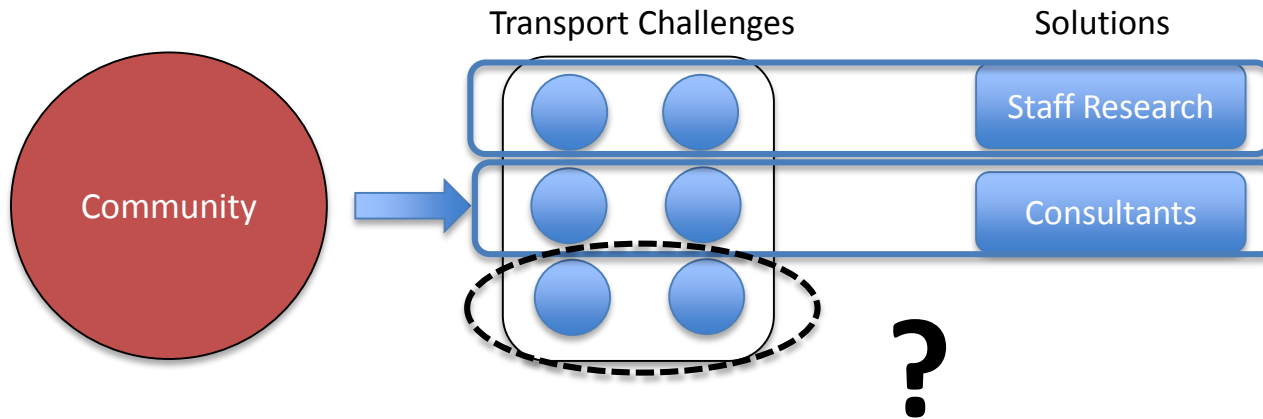
The Community Transportation Research Lab (CTRL) @ UNB

Trevor Hanson, PhD, P.Eng
Professor of Civil Engineering

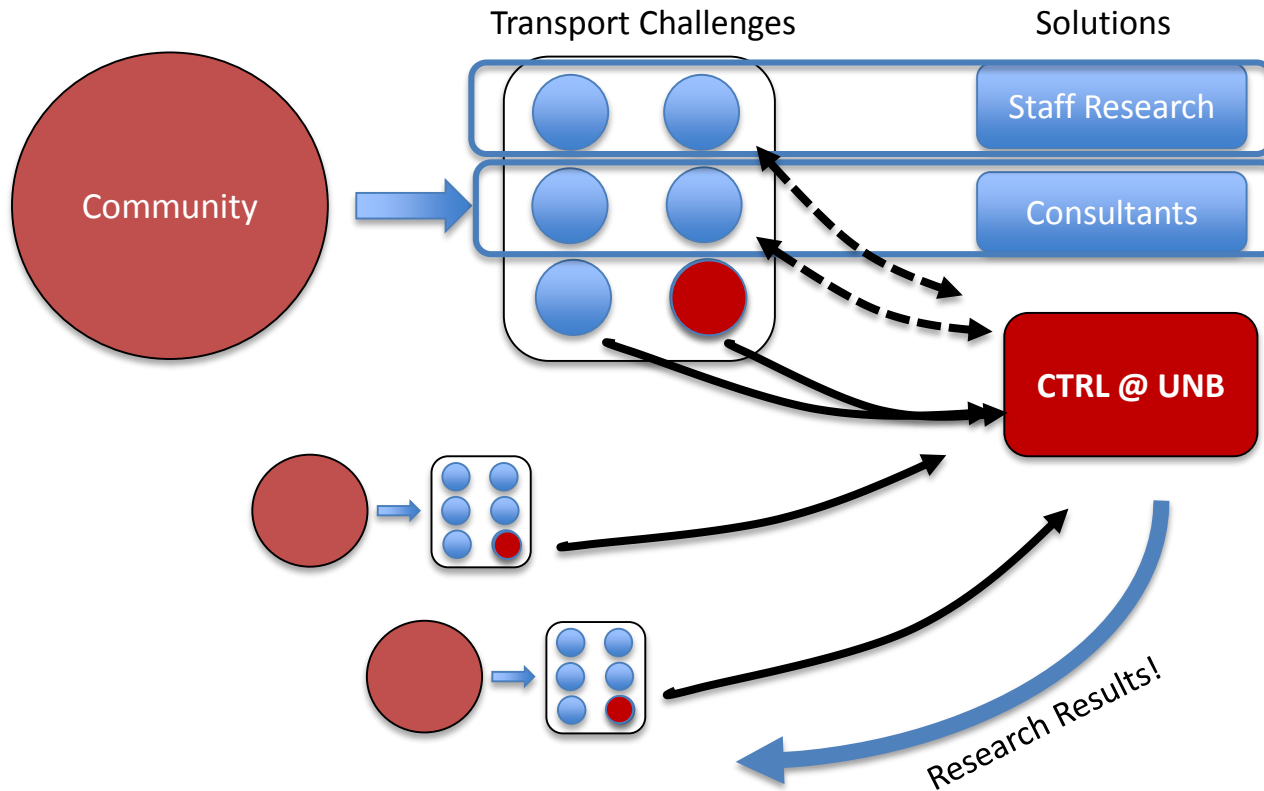
What is CTRL?

- **We need a place in NB to help us:**
 - Better understand transportation trends and issues for communities
 - Explore alternatives to the “way we’ve always done it”
 - Mobilize solutions at all community scales (urban, rural)
- **Help define a new transportation vision that increases mobility while making it easier to drive less**
- **CTRL provides a STRUCTURE to formulate ideas, conduct research and train students, & engage communities – a university setting provides an excellent anchor**

CTRL: Leveraging partnerships for progress



CTRL: Leveraging partnerships for progress



Help communities
better understand
their needs

Inform decision-
making

Improve planning
practice

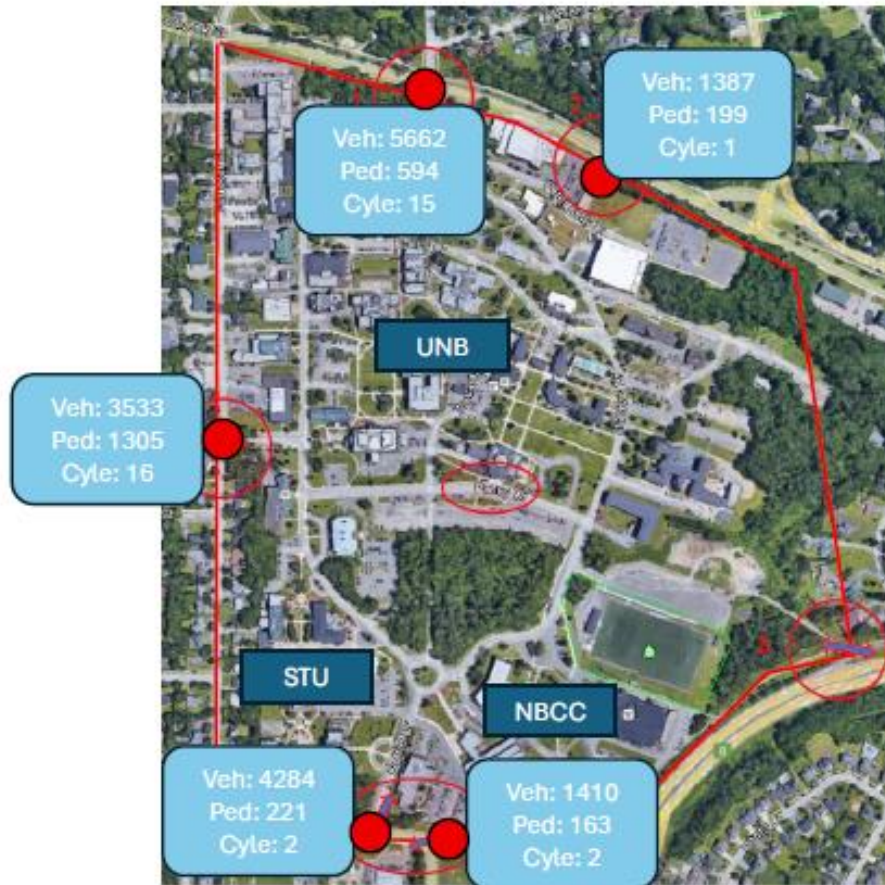
Train the next
generation of
transport engineers



Example: Can we think differently about addressing College Hill parking and traffic issues?

UNEB

Cordon Study (March 2023)



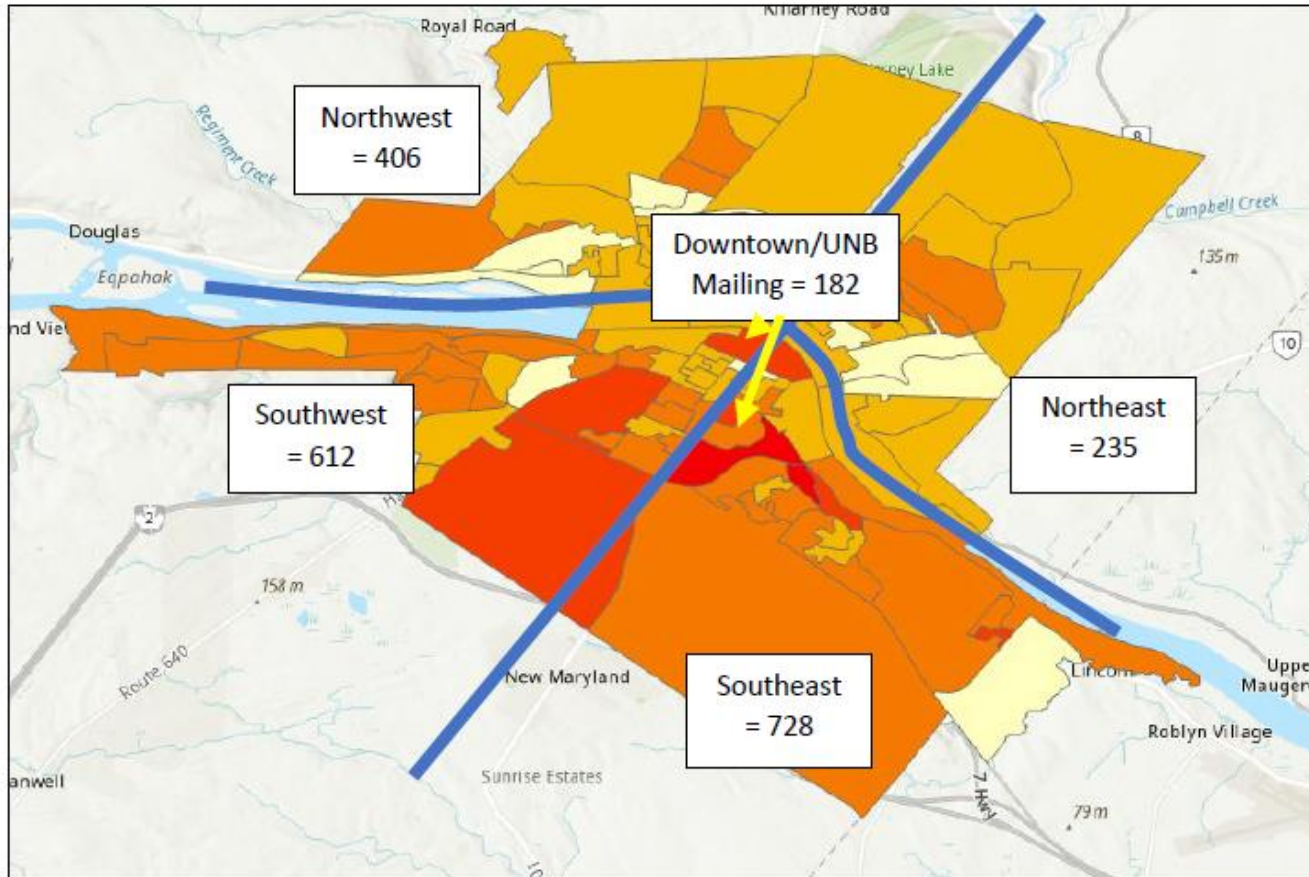
Limits of College Hill Cordon Study and March 2023 counts averaged to one day
(Debly, 2023)

At least 16,000
vehicles in and out
of College Hill daily

2,500 pedestrians
(at least)

1,240 Transit
Boardings and
Alightings per day in
Sept 2024

Over 2000 parking passes in City



2163 passes
within City
Limits

1522
southside
641
northside

Figure 2: Parking pass ownership within the City of Fredericton

Hanson and Bhosale, 2025

But about 5300 in total!

	All passes, UNB/STU/NBCC	%
Within Fredericton City Limits	2163	49%
Outside Fredericton, but Within 80 km of UNBF	1580	36%
Farther than 80 km	683	15%
Unknown	990	-
Total	5287	

Top passholder locations

Fredericton –	49%
Hanwell -	4%
New Maryland	4%
Oromocto	3%

Reducing travel demand
means also thinking
Regional Strategies

UNB students are highly dependent on cars on each campus, but also use transit when it works for them...

Primary Mode	Fredericton	Saint John
Passenger vehicle	50%	65%
<i>Drive alone</i>	40%	53%
<i>Drive with others (Carpool, get dropped off, etc.)</i>	10%	12%
Walk	28%	5%
Public transit	17%	30%
Bicycle	1%	0%
E-bike or scooter	0%	0%
Other	4%	0%

Takeaways?

- **Transportation issues like these are bigger than any one organization, but transportation often SILOED**
- **We took a 30,000' look – does this allow all to see issues differently? Could our approach help?**
- **A lot of positive developments @ city – Transit U pass, Transit technology, data sharing, collaboration**
- **Are there bigger developments needed at the provincial level to foster the mobility changes communities hope to see?**

Conclusions

- **We want to be a resource to help NB Communities explore new ideas while building capacity and fostering progress**
- **Going forward - Can we help you think big? Opportunities to collaborate formally?**