

LIVABLE COMMUNITY COMMITTEE OPEN MEETING

COMITÉ SUR LA COMMUNAUTÉ HABITABLE SÉANCE OUVERTE AU PUBLIC

Date: **Thursday, April 3, 2025, 12:00 p.m.**
Location: **Council Chamber, City Hall, Fredericton**

Date : **le jeudi 3 avril 2025, 12 h 00**
Endroit : **La salle du conseil de l'hôtel de ville, Fredericton**

1. Committee Membership

Councillor Ruth Breen, Chair
Councillor Mark Peters, Vice-Chair
Councillor Margo Sheppard, Member
Councillor Bruce Grandy, Member
Deputy Mayor Jocelyn Pike, Member
Councillor Steven Hicks, Member
Councillor Jason LeJeune, Member
Councillor Greg Ericson, Member
Councillor Henri Mallet, Member
Councillor Eric Megarity, Member

2. Call to Order

3. Declaration of Conflict of Interest

Conflict of Interest

Members of Council must disclose if they have a conflict of interest in any matter which is the subject of consideration before Council.

4. Agenda Items

4.1 **Stepping Stone Senior Centre Update**

PowerPoint Presentation by: (15 mins)

1. Composition du comité

Conseillère Ruth Breen, présidente
Conseiller Mark Peters, vice-président
Conseillère Margo Sheppard, membre
Conseiller Bruce Grandy, membre
Mairesse adjointe Jocelyn Pike, membre
Conseiller Steven Hicks, membre
Conseiller Jason LeJeune, membre
Conseiller Greg Ericson, membre
Conseiller Henri Mallet, membre
Conseiller Eric Megarity, membre

2. Ouverture de la Séance

3. Déclaration de conflit intérêts

Déclaration de conflit d'intérêts

Les membres du conseil sont tenus de signaler tout conflit d'intérêt avec un point dont le conseil est saisi.

4. Points de l'ordre du jour

4.1 **Mise à jour sur le centre pour personnes âgées Stepping Stone**

Présentation PowerPoint par: (15 min)

- Anne Marie Hartford, President, Stepping Stone Senior Centre

- Anne Marie Hartford, Présidente, Centre pour personnes âgées Stepping Stone

4.2 **Fredericton Marathon Update**

PowerPoint Presentation by: (15 mins)

- Pat Olsen, Sport Tourism Coordinator
- Bruce McFarlane, Co-race Director, Fredericton Marathon
- Christine Little, Co-race Director, Fredericton Marathon

4.2 **Mise à jour sur le marathon de Fredericton**

Présentation PowerPoint par: (15 min)

- Pat Olsen, Coordinateur Tourisme sportif
- Bruce McFarlane, co-directeur de course, Marathon de Fredericton
- Christine Little, co-directrice de course, Marathon de Fredericton

1

4.3 **Canada Day Celebrations - Fireworks or Drones**

PowerPoint Presentation by: (10 mins)

- Stacey Russell, Manager, Tourism & Events

4.3 **Célébrations de la fête du Canada - Feux d'artifice ou drones**

Présentation PowerPoint par: (10 min)

- Stacey Russell, Gestionnaire, Tourisme et événements

11

4.4 **Killarney Lake Park Recreation Activities Update**

PowerPoint Presentation by: (20 mins)

- Meredith Cooper, Manager, Policy & Strategic Planning

4.4 **Mise à jour des activités récréatives du parc du lac Killarney**

Présentation PowerPoint par: (20 min)

- Meredith Cooper, Gestionnaire, Politique et Planification stratégique

20

5. Adjournment

5. Levée de la séance



Fredericton **Marathon** *2025 de Fredericton*



City of Fredericton – Livable Communities
April 3, 2025

Fredericton Marathon race weekend

The Fredericton Marathon weekend consists of:

Race kit pick up and Expo –
Friday & Saturday

5k and Youth Fun Run –
Saturday

10k, 21.1k and 42.2 k* – Sunday

Known as fast, flat and fun

*Boston Qualifier

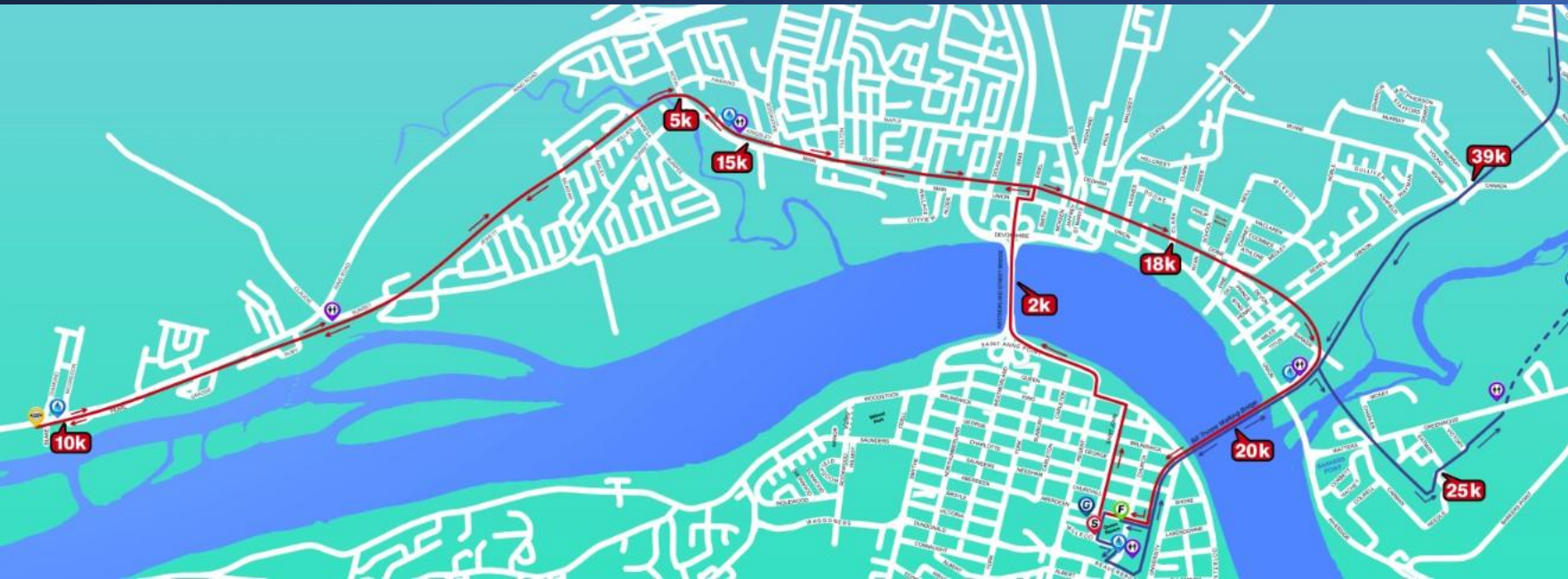


Participation

- **3,062** participants 2019
- **672** participants 2020*
- **1,453** participants 2021
- **1,668** participants 2022
- **2,148** participants 2023
- **2,815** participants 2024



New Route



Due to trail congestion and significant increases in both the 2024 half and full marathon events, we revised our marathon route to address this problem. The new route sees full marathoners running out past the City limits by Blake Court before coming back to the start line area by Queen Square Park to start a second loop going out Penniac via the Bill Thorpe Walking Bridge.



Strategic Plan



In 2023, FMI created a five-year strategic plan to guide us to our 50th anniversary in 2028.

Highlights include:

- More heads in beds by increasing participation numbers
- Host national championship race in Fredericton

Road Race Label Program

In 2023, Athletics Canada initiated the Road Race Label program designed to raise the profile of Canadian races which, in turn, will offer a superior participant experience

- Increase the number of high-level competitions in Canada
- Reduce the amount of travel required by Canadian Athletes
- Help to develop athletes for future National Team representation



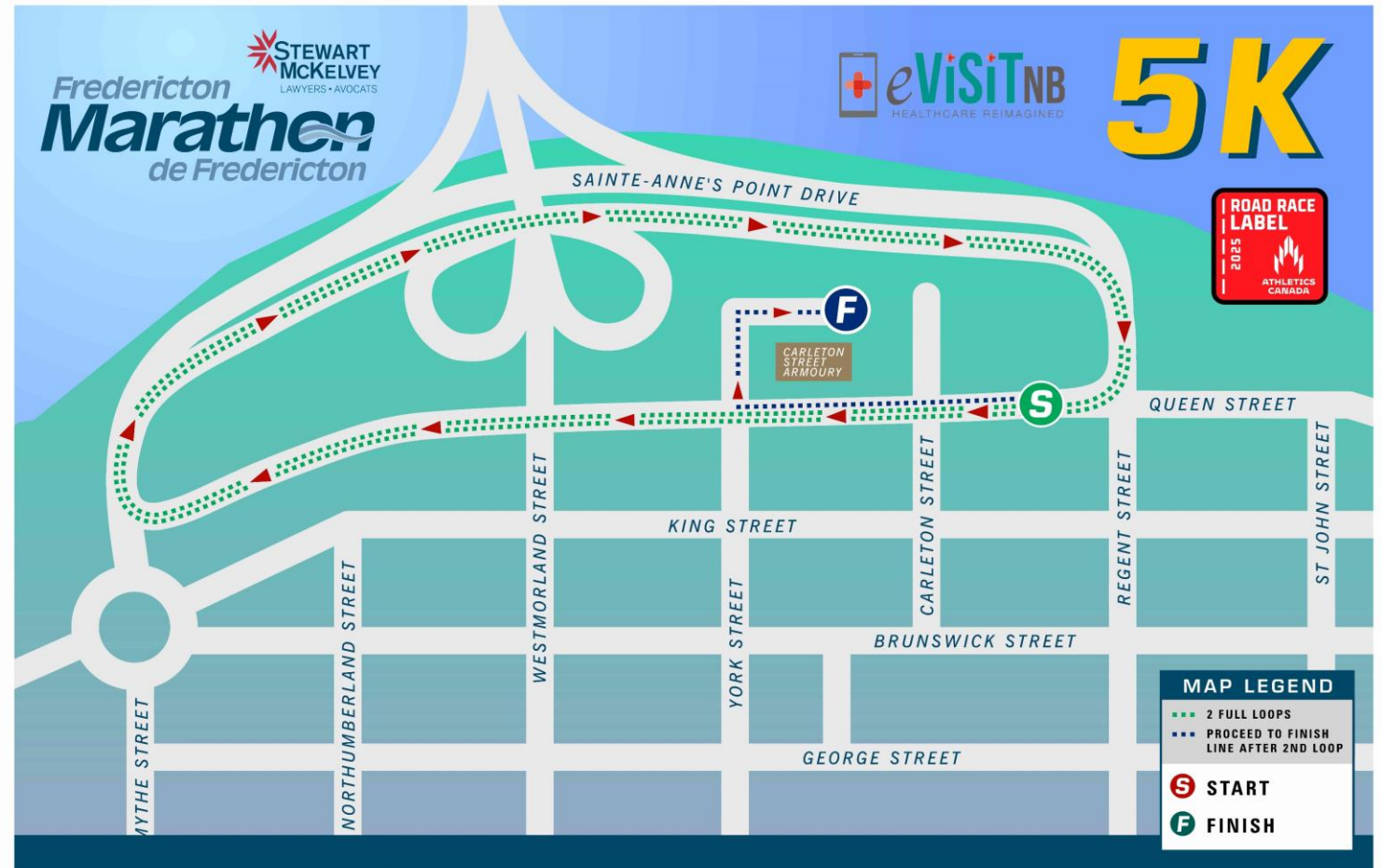
May 2025

As part of May 2025 Fredericton Marathon race weekend, FMI applied for a Road Race Label event.

Athletics Canada awarded us a 5k Road Race Label status.

This road race label status is a first for Atlantic Canada, making it the only race east of Quebec City.

Bringing the 5k event to the downtown core Saturday morning*



Partnership



- Montreal Marathon, Maine Marathon, Valley Harvest Marathon and Legs for Literacy **2022**
- Legs for Literacy **2023**
- Legs for Literacy, Valley Harvest Marathon **2024**
- Bluenose Marathon, Legs for Literacy **2025**
- Advertise in Canadian Running Magazine, New England Runner

THANK YOU

City of Fredericton Sports Tourism has been a valuable partner for many years, partnering with our event.

FMI (Fredericton Marathon Inc.) looks forward to continuing and expanding our partnership especially over the next few years*



Fredericton
Sports Tourism / Tourisme sportif

Questions





Canada Day Celebrations

Fredericton

Canada Day in Fredericton

- 30+ years – Celebrations run by the Civic Pride Committee
- 2024 – Celebrations now managed and delivered by the City
- Evening fireworks show
 - Cost – \$26,000
 - Downtown Fredericton Partnership (\$10,000)





- Are fireworks the best way to celebrate?
 - Many love fireworks – most asked question (will there be fireworks)
 - Issues with sound, environmental etc..
- Should we consider a drone show?
 - Aerial displays that use a fleet of drones
 - Most shows seen on TV begin in the 300-500 drones range
 - Subject to weather – not possible in rain, snow or winds over 30km/hour
 - Shows are made up of 15-19 images depending on number of drones involved.
 - Cost prohibitive

500 drones



300 drones



150 drones





We need a better understanding

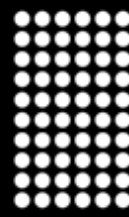
- Lack of knowledge on drone shows
- Many cities have begun to investigate
- Drone shows not currently being done for Canada Day in the Maritimes



Looking ahead to 2026

- RFP for Canada Day Celebrations
 - Fireworks and/or drones
- Update to Council in the





LEFF

WELL CRAFTED

Fredericton

Killarney Lake Park Management Plan

Recreation Activities Implementation Update

Presented to:

City Council Livable Community Committee
April 3, 2025

Presented by:

Meredith Cooper, Manager Policy & Strategic
Planning, RTC



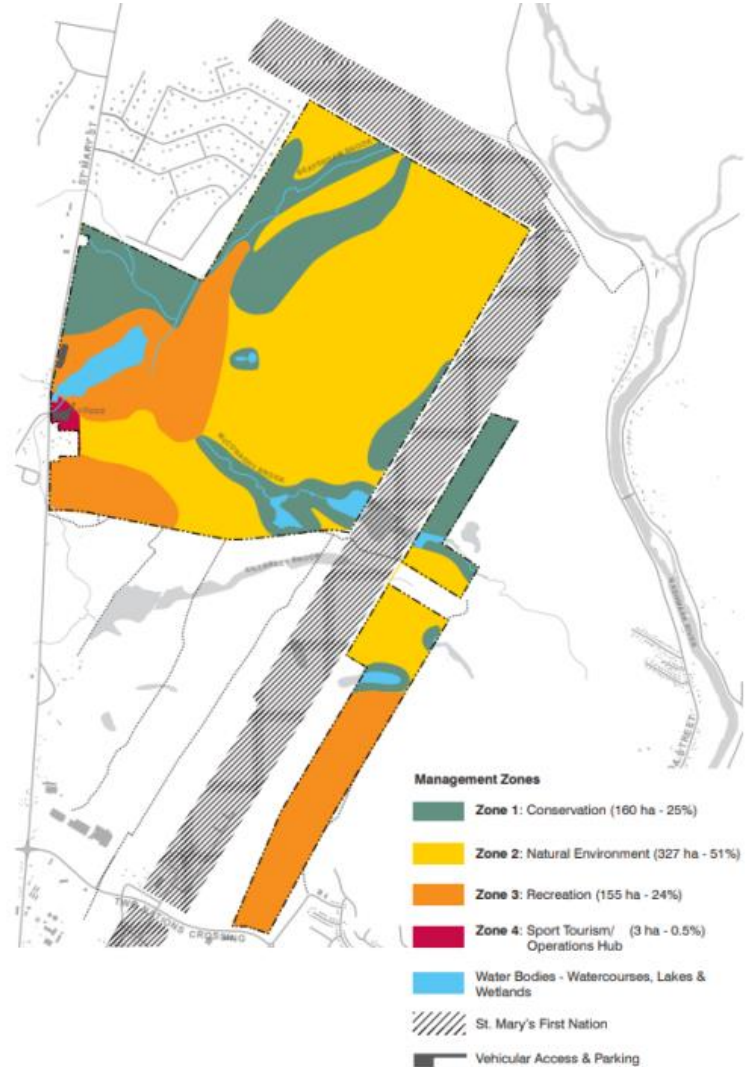
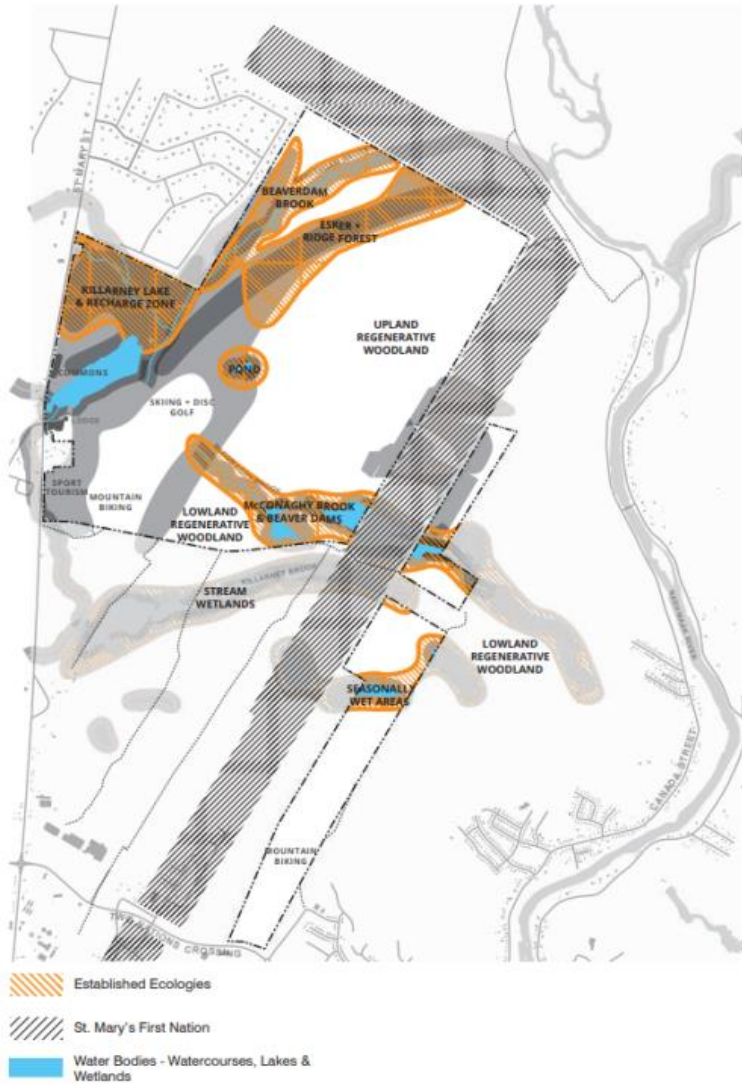
Outline

- Background & Context
- Recreation Projects Updates
 - Championship Disc Golf Course
 - Mountain Bike Skills Park & Trail Network
 - Natural Playpark
- Stakeholder Engagement
- Timelines
- Discussion

Background & Context

- Killarney Lake Park was first conceived in 1977, when the City began acquiring land for a large park on the City's northside.
- Prior to becoming a nature-based park facility, the area was logged aggressively for centuries, and experienced significant disturbance and impact.
- Because of this history, the entire park landscape is classified as an early successional forest with juvenile ecologies (i.e. shallow and infertile soils, limited species diversity, etc.).
- The Killarney Lake Management Plan was adopted by City Council in June 2020 and is intended to:
 - Compliment the vision for Odell Park, towards a sustainable future
 - “develop a park capable of providing the recreational needs that Odell Park [does] not have the capacity to absorb”.
 - Serve as a regional sport / competition hub.

Background & Context



Background & Context

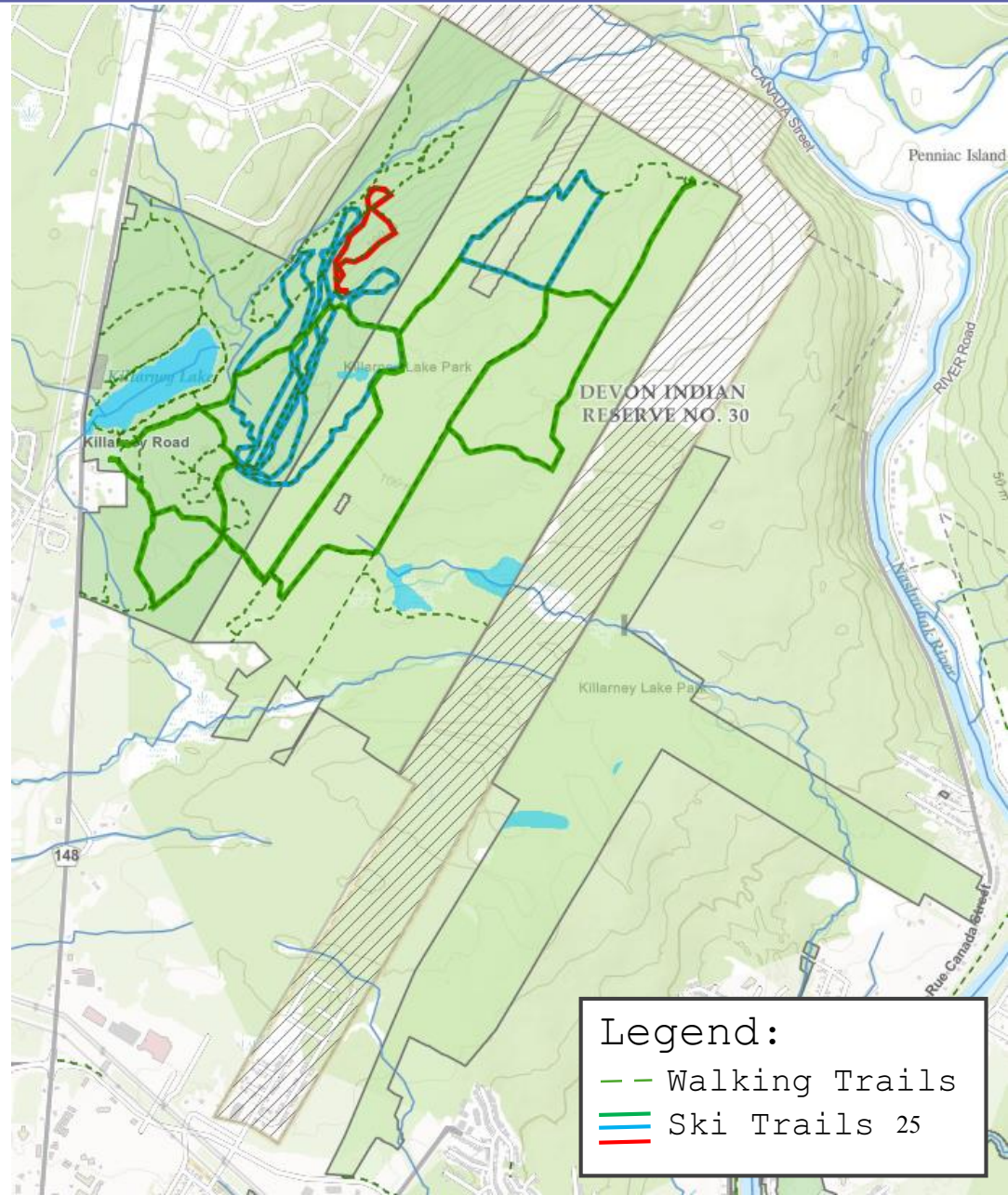
- Planned uses align with the:
 - Killarney Park Management Zones; and,
 - Urban Forest Management Strategy's vision "to sustain a biodiverse urban forest throughout the City for a resilient environment and healthy people".
- As directed by the Plan, staff are working with designers and an ecologist to ensure:
 - Areas of increased ecological potential are identified.
 - Uses are realigned away from these areas as required.
- Temporary openings in the tree canopy will release and strengthen the forest undergrowth.

Background & Context

Fredericton's Outdoor Recreation Hub

Existing Uses:

- Ski Trails
- Walking Trails
- Snowshoe Trails
- Swimming
- Accessible Dock

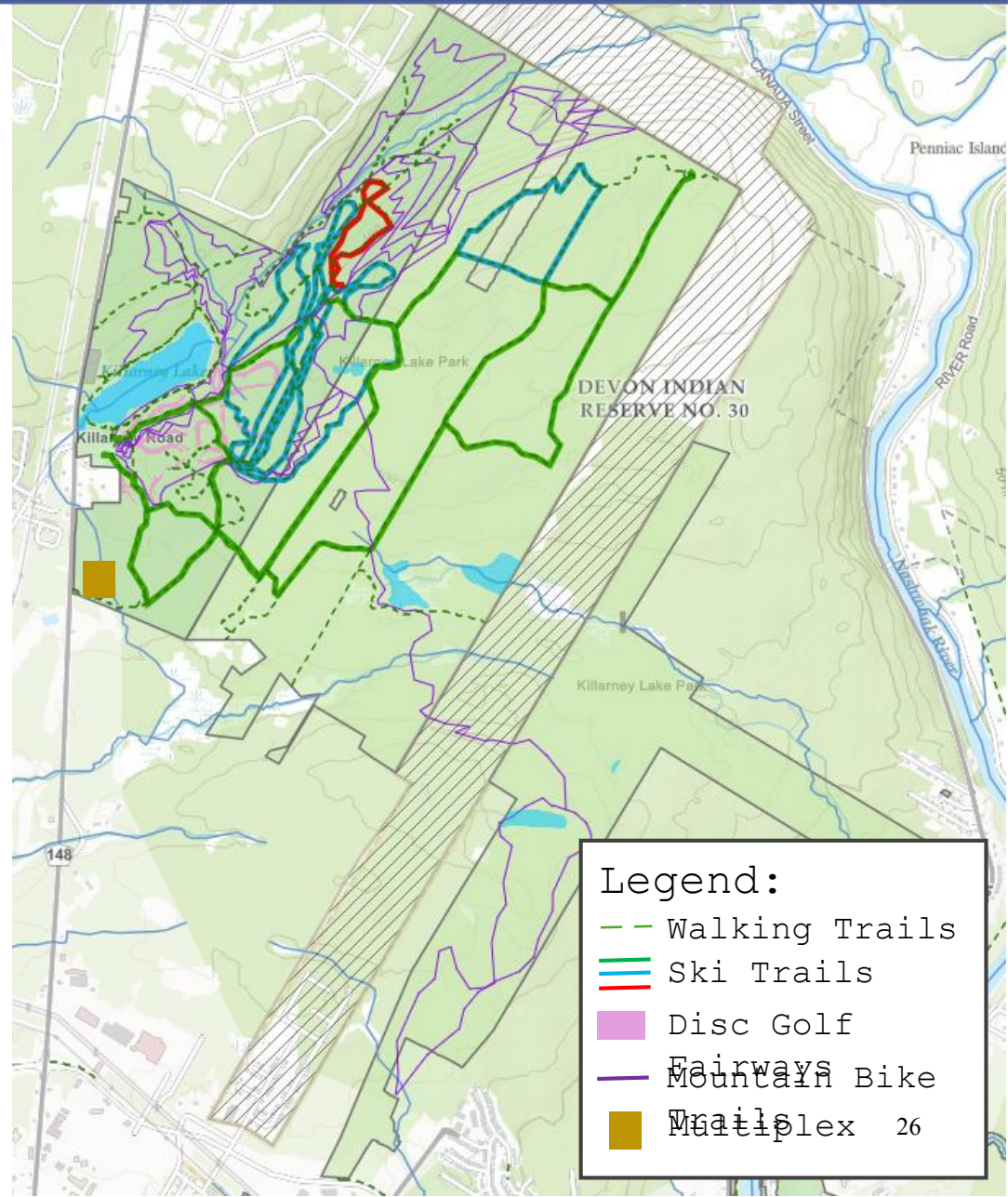


Background & Context

Fredericton's Outdoor Recreation Hub

Existing & Planned Uses:

- Ski Trails
 - Competition Level
- Walking Trails
- Snowshoe Trails
- Swimming
- Accessible Dock
- Disc Golf
 - Year-round Use
 - Competition Level
- Mountain Biking
 - Skills Park
 - Year-round Trails
 - Competition-potential
- Inclusive Natural Play Area
- Accessible Beach Access



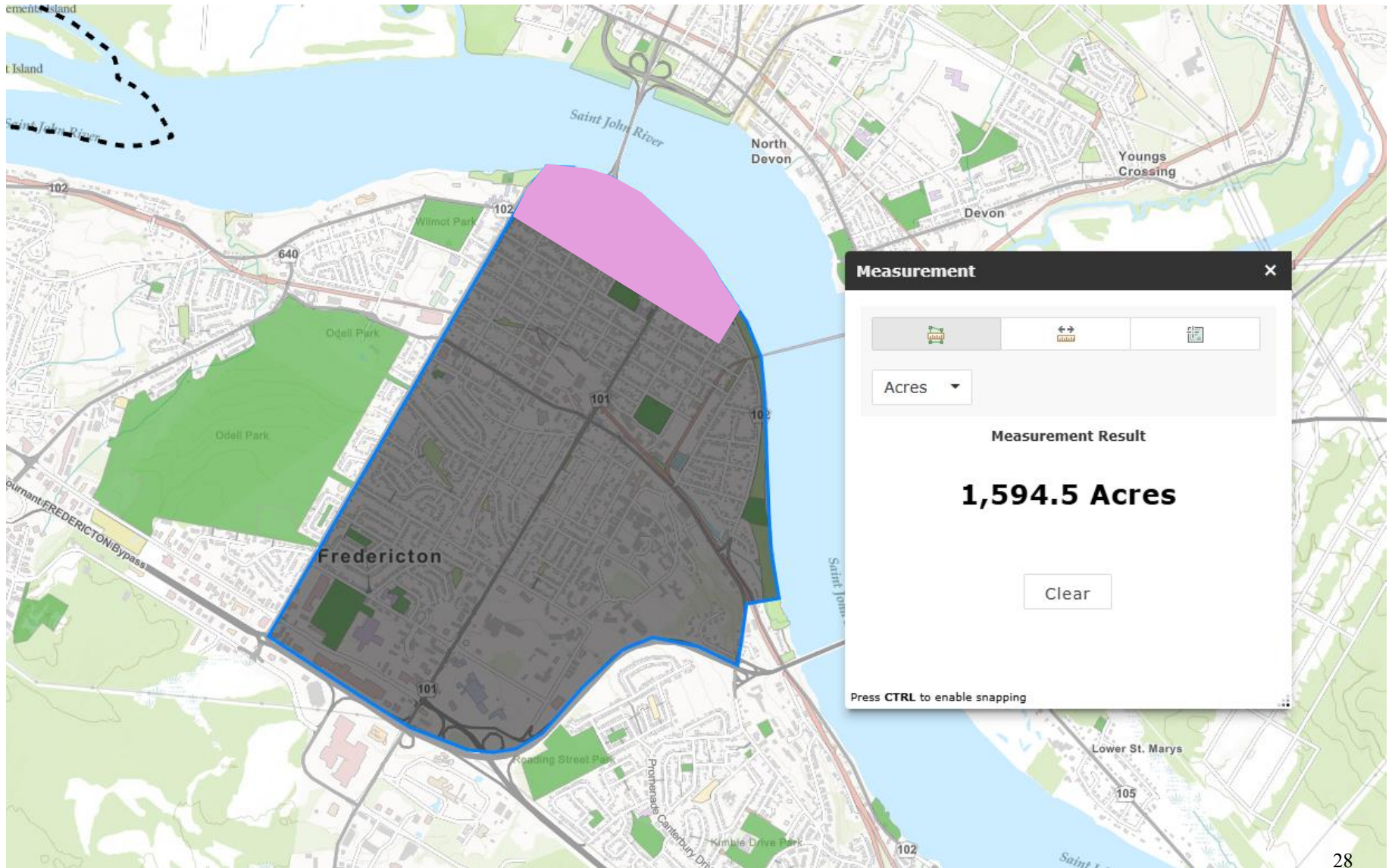
Legend:

- Walking Trails
- Ski Trails
- Disc Golf
- Mountain Bike
- Trails

Background & Context

- Today the park comprises 1,594 acres / 645 hectares
- Existing ski trails comprise approximately 65 acres, or 4% of the total park area.
- Ski trails combined with planned disc golf, mountain bike, and ball fields uses will comprise approximately 9% of the total park area.

Background & Context



Recreation Activities Updates

Outdoor Recreation Hub Benefits:

- Opportunities for all ages and abilities
- Affordable opportunities for healthy, active living
- Designs that foster learning and skill development
- Increased year-round access to the City's largest park
- Foster a connection with and respect for nature
- Improved access to special features and ecologies
- Educational opportunities
- Visitor attraction
- Sport tourism potential

Recreation Activities Update

Mountain Bike Skills Park & Trail Network



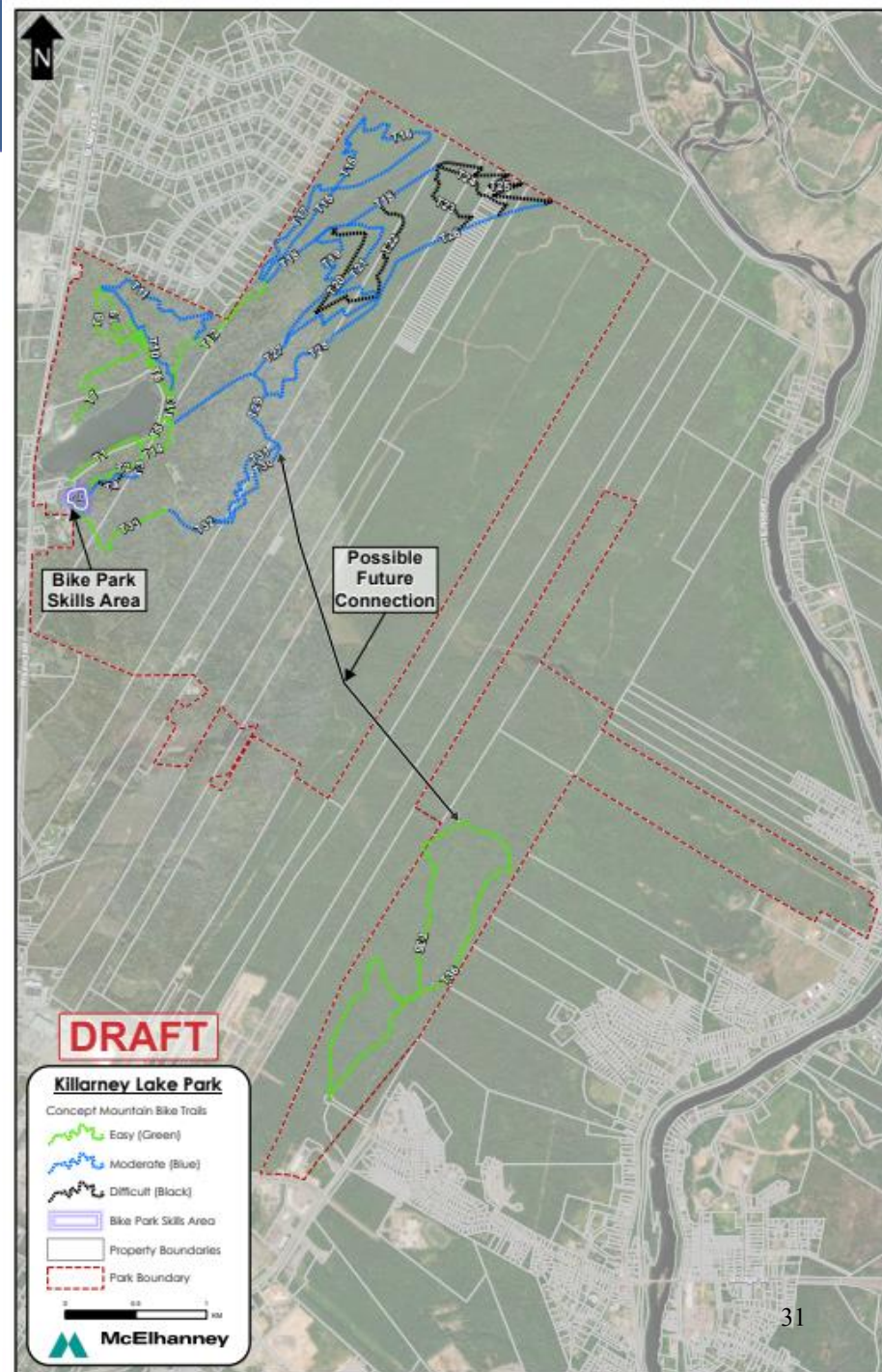
Photo Credit: www.nanaimo.ca

Concept Design Overview

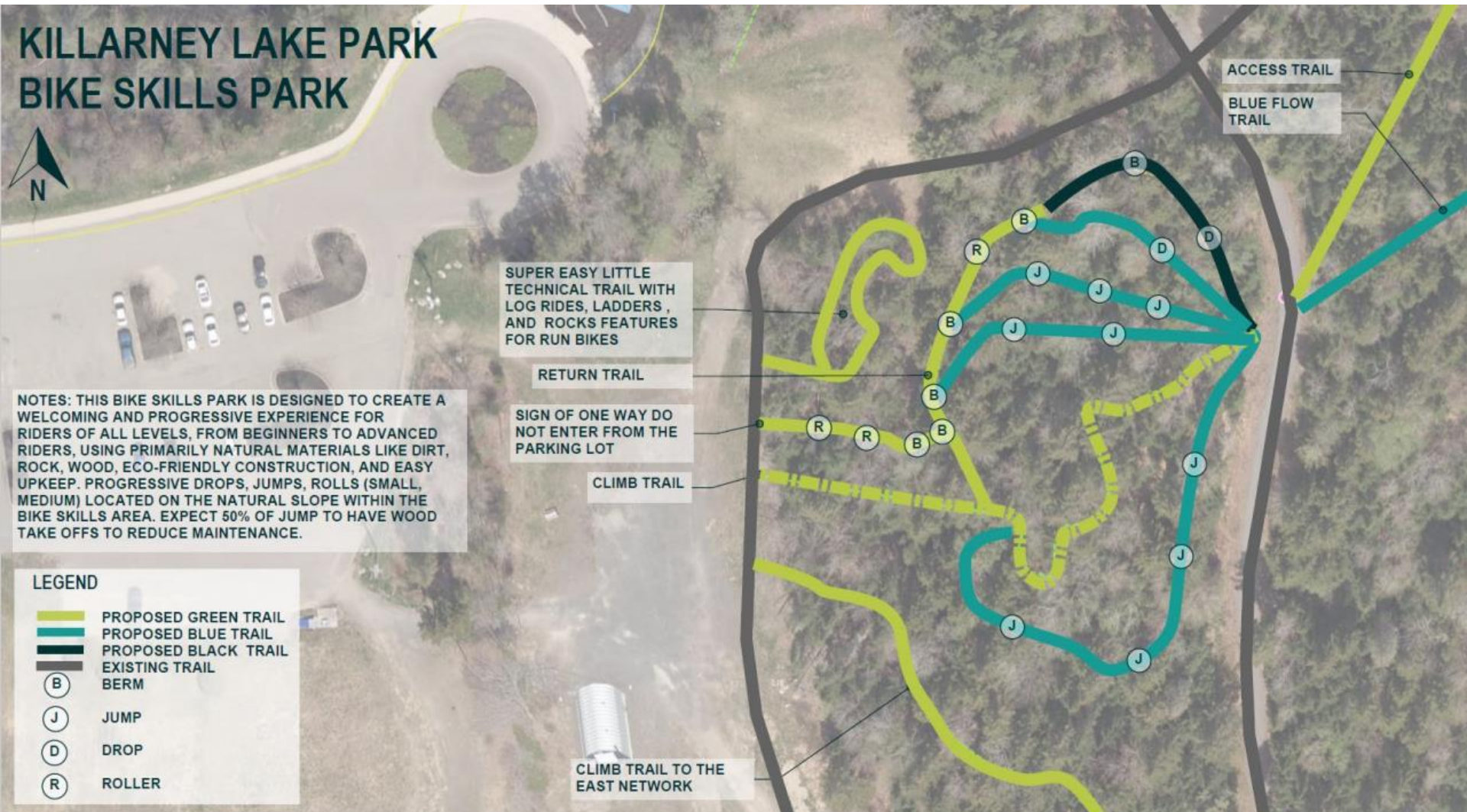
- Natural surface single track trails
- Includes Adaptive Mountain Bike Trails
- Long-term Total Concept Layout = +/- 32km
- Preliminary Trail Development = 15km
 - 2 phases planned for 2025 & 2026
- 'Marysville Connector' & southeast trails part of future phases
- Potential for trails for winter use
- Sport Tourism: Competition course integrated into network layout
- Visitor attraction



Photo Credit: River Valley Cycling

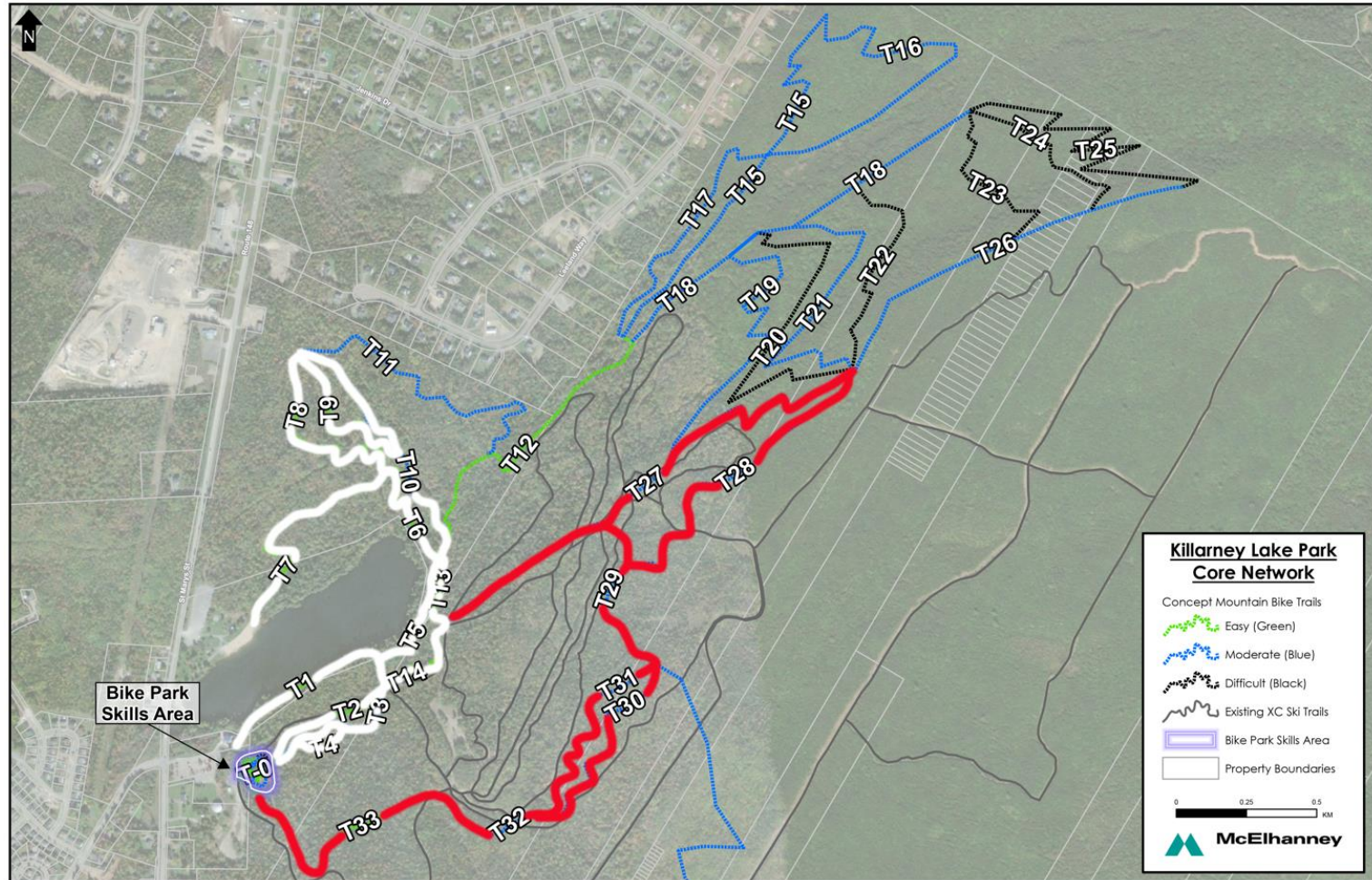


Recreation Activities Update: MOUNTAIN BIKING



Recreation Activities Update: MOUNTAIN BIKING

Trail Network and Phasing



- 2025 & 2026 Trail Construction to include red and white trail sections
- Some Adaptive trails included in preliminary phases
- Remaining trails to be built as part of the longer term Park

Recreation Activities Update: MOUNTAIN BIKING

APPENDIX A - ADAPTIVE MOUNTAIN BIKING (AMTB) TRAIL DIFFICULTY RATING SYSTEM

	aMTB WHITE	aMTB GREEN	aMTB GREEN SQUARE	aMTB BLUE	aMTB BLACK	aMTB DBL BLK	aMTB DBL BLK
TRAIL WIDTH: (ave/min)	1.8m+ (72"+)	1.8m/1.5m (72"/60")	1.7m/1.4m (66"/54")	1.5m/1.2/ (60"/48"+)	1.2m/1m (48"/40")	1.1m/0.98 m (44"/38.5")	<0.98m (<38.5")
TREAD SURFACE:	hardened or surfaced	firm and stable	mostly stable some variability	mostly stable some variability	widely variable	widely variable and unpredictable	widely variable and unpredictable
OBSTACLES (TTF):	no obstacles	obstacles full width 2" or less / no asymmetrical tread areas	obstacles full width 5" or less / partial width 2" or less	obstacles full width 8" or less / partial width 3" or less	obstacles full width 12" or less / partial width 6" or less	obstacles full width 12" or less / partial width 10" or less / assistance recommended	impassable obstacles / assistance required
UNAVOIDABLE BRIDGES: (wider if not straight)	1.8m+ (72"+)	1.5m+ (60"+)	1.5m+ (60"+)	1.4m+ (54"+)	1.2m+ (48"+)	1m+ (40"+)	<0.98m (<38.5") possible
MAX TRAIL GRADE:	10% (6 deg)	15% (8.5 deg)	20%+ (11 deg)	20%+ (11 deg)	20%+ (11 deg)	25%+ (14 deg)	25%+ (14 deg)
CAMBER: TURNS, BERM & TTF	level	only enough to drain	Some off camber possible: max 36.5% (20 deg)	Some off camber possible: max 36.5% (20 deg)	Some off camber likely: max 58% (30 deg)	Off camber certain: 58%+ possible (>30 deg)	Off camber certain: 58%+ possible (>30 deg)
CAMBER: TRAIL STRAIGHTAWAYS	level	only enough to drain	max outslope 5-8% (3-5 deg)	max outslope 5-8% (3-5 deg)	max outslope 8-14% (5-8 deg)	max outslope 8-14% (5-8 deg)	14%+ (> 8 deg) outsloping possible
MIN FLAT CORNER RADIUS:	7.5m (24.5 ft)	6m (20 ft)	6m (20 ft)	6m (20 ft)	6m (20 ft)	4.5m (15 ft)	4m (13 ft)
MIN BERM CORNER RADIUS:	n/a	n/a	6m (20 ft)	4.5m (15 ft)	4.5m (15 ft)	<4m (13 ft)	< 3m (10 ft)
EXPOSURE:	no exposure	no exposure	no exposure	minimal exposure	exposure likely	exposure likely	exposure likely
RECOMMENDED EQUIPMENT:							
<small>*Riders may choose to take equipment on trails falling outside of recommended trail difficulty at their own risk, but in this case support rider always recommended. !</small>							

RECOMMENDED EQUIPMENT / CATEGORY DESCRIPTIONS (LEGEND)

WHEELCHAIR:

- Manual wheelchair (with or without front wheel attachment)
- Powerchair
- Scooter
- Any other mobility related device



CROSS-COUNTRY (RECUMBENT / COMBINED CRANK & STEERING):

- **One wheel in the front** and two in the back
- Front wheel drive
- Seating – recumbent type seating with legs straight ahead
- Full or no suspension depending on brand



ALL-MOUNTAIN (RECUMBENT / COMBINED CRANK & STEERING):

- **Two wheels in the front** and one wheel in the back
- Rear wheel drive
- Seating – recumbent type seating with legs straight ahead
- Full suspension or rear suspension only depending on brand



ALL-MOUNTAIN (KNEELING / HANDLEBARS W/ SEPARATE CRANK):

- Two wheels in the front and one wheel in the back
- Rear wheel drive
- Seating – kneeling with cranks below you and handlebar above
- Full suspension or rear suspension only depending on brand



BOWHEAD ALL ELECTRIC

- Two wheels in the front and one wheel in the back
- Articulating front end
- Full electric with hand twist throttle; no crank; Rear wheel drive
- Seating – recumbent type seating with legs straight ahead
- Full Suspension



Recreation Activities Update: MOUNTAIN BIKING

Management and Design

Objectives:

- Trail clearing limit: 1.0m to 2.5m
- Strong preference to limb trees along edge of trail in lieu of cutting.
- Trunks create a slalom course that increases fun and slows down users.
- Avoid trees >30cm DBH. Generally avoid most trees over 15cm DBH.
- Maintain old growth Acadian forest species (i.e. yellow birch, sugar maple, hemlock, etc.).
- Engage expertise of trail designers and ecologist to preserve integrity of natural systems while creating challenging and interesting trails.
- On-the-ground proposed trail route delineation, realignment where required.
- Inventory and analyze areas with increased ecological potential:
 - Significant / mature tree specimens
 - Areas of increased species diversity
 - Evidence of habitat and faunal associations
 - Rare plant / tree species
 - Areas of spring water movement and potential amphibian breeding areas

Recreation Activities Update: MOUNTAIN BIKING



Photo Credit: Soft Yoghurt, Trail Forks

Recreation Activities Update: MOUNTAIN BIKING



Photo Credit: www.mountainbikeatlantic.com

Recreation Activities Update: MOUNTAIN BIKING



Photo Credit: Good Trails, You Tube

Recreation Activities Update: MOUNTAIN BIKING



Recreation Activities Update: MOUNTAIN BIKING



Photo Credit: River Valley Cycling

Recreation Activities Update: MOUNTAIN BIKING



Photo Credit: Kootenay Adaptive Sport Association

Recreation Activities Update: Mountain Biking



Photo Credit:
www.mvpf.org



Photo Credit:
www.nanaimo.ca



Photo Credit: The Railyard, FB



Photo Credit: www.havefunbiking.com

Recreation Activities Update

Championship Disc Golf Course



Recreation Activities Update: DISC GOLF

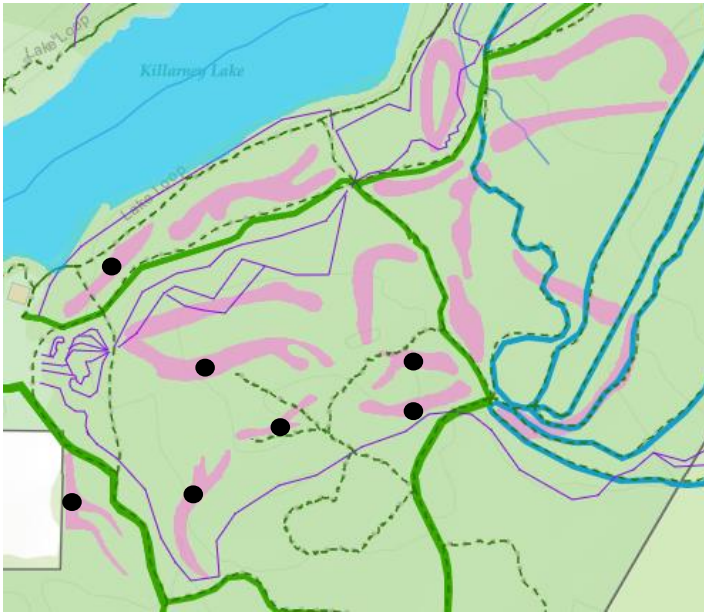
Features and Sustainability

Alignment:

- Competition-level 18-hole, par 67 course (9-hole winter course).
- 2 tee + 2 basket layout allows multiple course options and levels for users.
- Stadium viewing and event areas.
- Disc golf is a flight-based, rather than ground-based sport. This means:
 - No manicured fairways, pesticides, herbicides, or intensive irrigation; and,
 - Fairways are integrated into the natural landscape.
 - Selective removal and thinning with a focus on weaker trees and invasive species to create a healthier, more resilient and biodiverse forest.

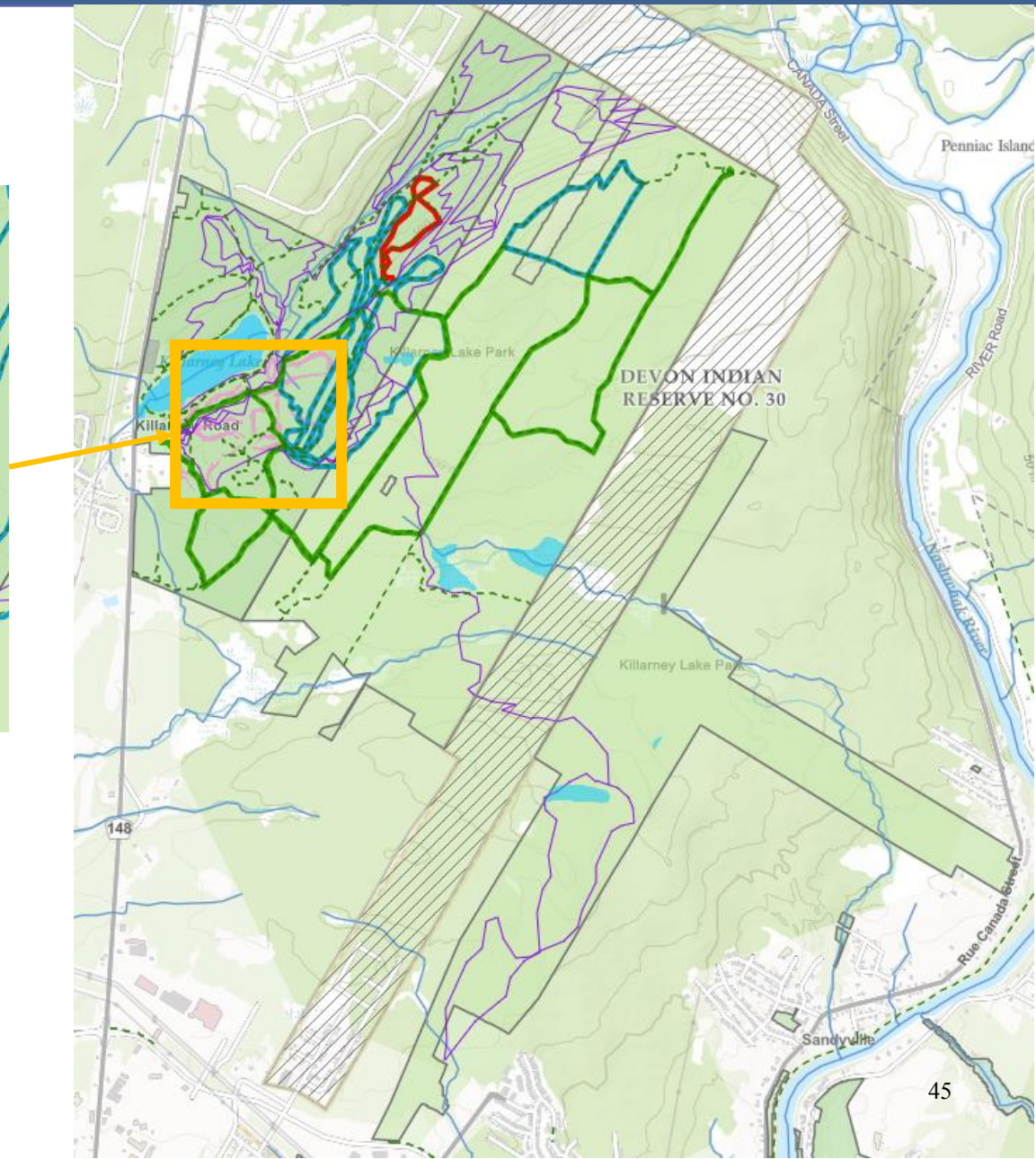
Recreation Activities Update: DISC GOLF

Course Layout:



Legend:

	Fairways
	Winter Holes



Recreation Activities Update: DISC GOLF



Recreation Activities Update: DISC GOLF



Short Par 3 Before

Short Par 3 After

Recreation Activities Update: DISC GOLF



Par 3 Tunnel Before

Par 3 Tunnel After

Recreation Activities Update: DISC GOLF

Before - Looking Forward



Before - Looking Back

° Hole 1 - Blue Tee °
Par 4 - 465 ft
270' to Landing Zone, 195' Approach
+20' Elevation to pin, plays ~525'

After - Looking Forward

Recreation Activities Update: DISC GOLF



Natural Play Area



Killarney Natural Playpark

Recreation Activities Update: NATURAL PLAYPARK



PLAN VIEW

Recreation Activities Update: NATURAL PLAYPARK



PLAN VIEW

Recreation Activities Update: NATURAL PLAYPARK



ENTRANCE

Recreation Activities Update: NATURAL PLAYPARK



CLIMBER

Recreation Activities Update: NATURAL PLAYPARK



SEATING AREAS

Recreation Activities Update: NATURAL PLAYPARK



INSTRUMENTS

Recreation Activities Update: NATURAL PLAYPARK



SAND PLAY

Recreation Activities Update: NATURAL PLAYPARK



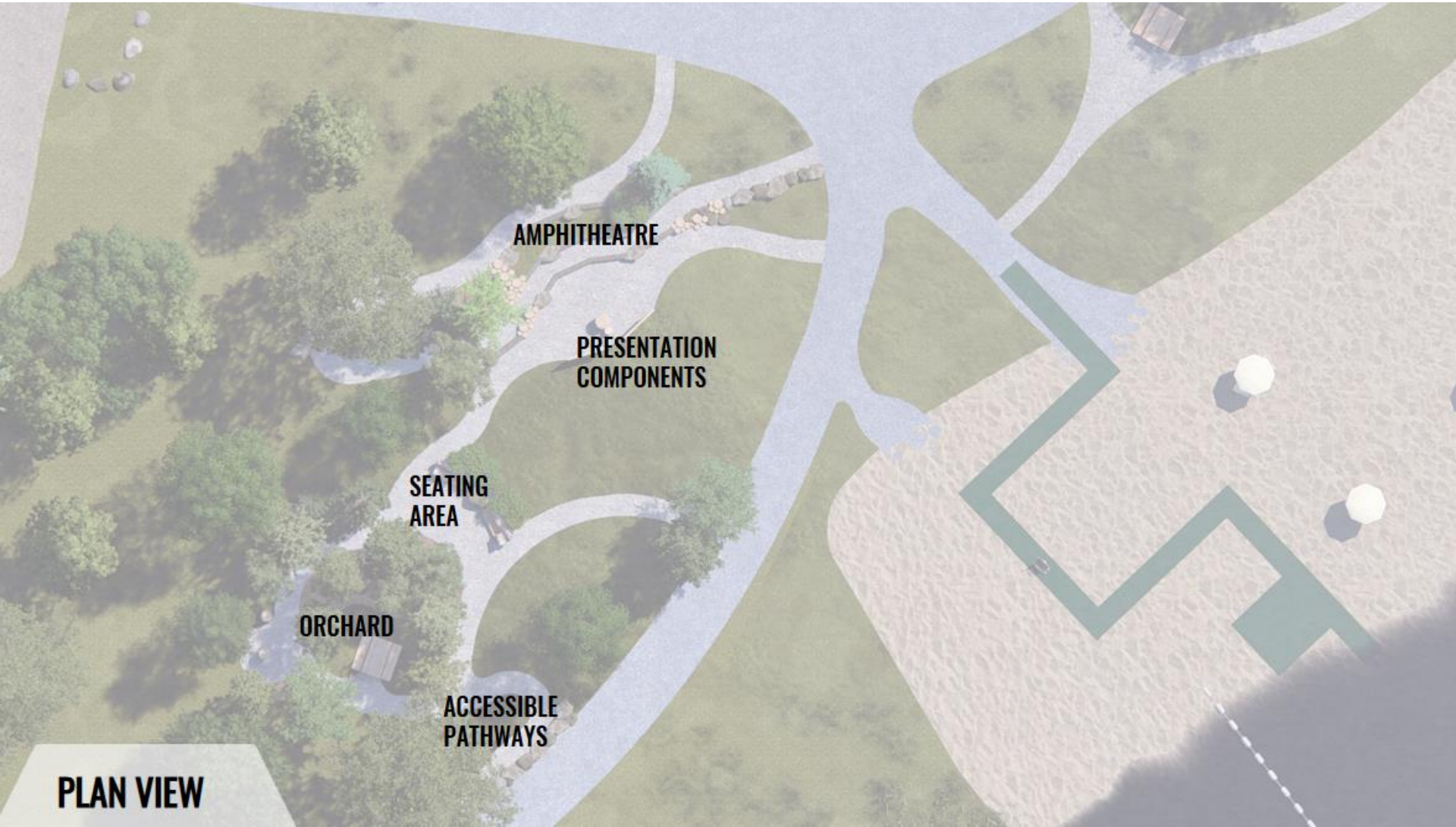
ACCESSIBILITY

Recreation Activities Update: NATURAL PLAYPARK



BEACH ACCESS

Recreation Activities Update: NATURAL PLAYPARK



Recreation Activities Update: NATURAL PLAYPARK



AMPHITHEATRE

Recreation Activities Update: NATURAL PLAYPARK



ORCHARD

Recreation Activities Update

Stakeholder Engagement:

- ✓ River Valley Cycling
- ✓ Fredericton Disc Golf
- ✓ Fredericton Tree Commission
- ✓ Wostawea
- ✓ Ability NB
- ✓ Parasport NB

Recreation Activities Update

Stakeholder Engagement – What We’ve Heard:

- ✓ Need for dedicated trails for walkers; off-leash dog walking
- ✓ Need to ensure operational capacity for grooming if adding winter uses
- ✓ Ensure safe trail crossings for different uses (i.e. at areas of low speed)
- ✓ Ensure barrier free parking spaces are maintained for winter use
- ✓ Share special events info to support organizer planning
- ✓ Snowshoe trails are important, should be maintained
- ✓ Take caution during and outside of migratory bird season
- ✓ Usage management during wet /spring periods (i.e. temporary closures if needed)
- ✓ Educate the public about important ecological features and species

Timelines & Next Steps:

Disc Golf:

- Tree removal and thinning: Winter
- Course development: Summer - Fall

Mountain Biking:

- Skills park & Phase I Trails: Summer - Fall
- Phase II Trails: 2026

Natural Playpark:

- Phase I: Playground Summer - Fall 2025
- Phase II: Amphitheatre TBD

Recreation Activities Update

Park Plan Implementation & Alignment

- Focus on Killarney 2025 – 2026 to facilitate completion of in-progress projects
- Park Plan implementation in progress for Odell, Carleton & Wilmot. Some areas of focus include:

Odell:

- Lodge Landscaping (2025)
- Removal of unsanctioned trails

Carleton:

- Stormwater Mgmt & Cognitive Arboretum (Concept/Detailed Eng. Design 2025, Construction 2026)
- Relocate boat launch to Hamilton Court (est. completion 2027)
- Grand Lawn, Riverfront Lawn, River's Edge Revitalization (pending boat launch relocation)

Wilmot:

- Playpark East, Parking Lot & Drop-off Loop, Stepping Stone Courtyard (Concept 2025, Detailed Eng. 2026, Construction 2027/2028)

Questions & Discussion

